

Type 086 Semiautomatic Bag Closing Machine



Series RJ



Series RL



Series RLP



Series R



Series L Closure-Label



Series U Closure-Label

Series CR Closure-Label



Model	Closure	Printer Available
086-100	Series RJ	No Printer
086-200	Series RL*	Printer Optional
086-300	Series L	Printer Optional
086-400	Series U	Printer Optional
086-400	Series L & U**	Printer Optional
086-500	Series CR	Printer Optional

* Also uses Series SL, RLP, SLP, R and S

** Requires a cassette to change from Series U to Series L

The 086 Semiautomatic Bag Closing Machine offers the packager a wide choice of options to meet most operations where a semiautomatic machine is required. Packagers have their choice of four types of Kwik Lok Closures, plus three sizes of closure-labels. Most models are available with printers that allow the printing of price, dates, codes, etc on the closure or closure-labels.

The machines features a powered break-off mechanism and powered closure advance. The operator simply inserts the open bag into the 086, the bag is closed, and removing the closed bag advances the next closure into the closing position.

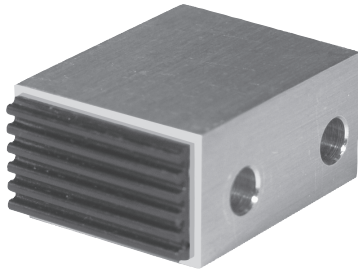
The use of the colorful, custom printed closure-labels can add value to your package and enhance your package's presence on the retail shelf. Many consumer decisions are made at the time of purchase and the addition of an attractive label can give your package an important marketing advantage.

The 086 is portable or can be mounted anywhere near an electrical outlet. High and low voltage models are available.



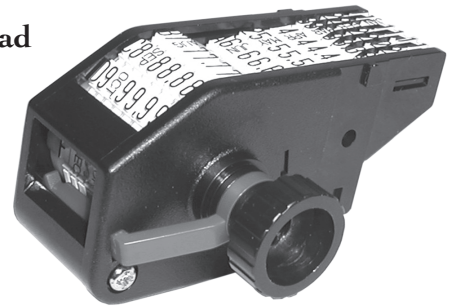
Printing With The 086

The printer uses a disposable ink roll, which eliminates the use of liquid ink. Several band printer configurations are available to meet package print requirements. A block printer is also available, allowing the packager to customize print beyond that which is offered on standard band printers. Block printers can also print two lines of type. Black and red ink colors are available. Printers have a plastic cover mounted over the printer to reduce intrusion of foreign materials into the printer's components.



Band Printer Head

Block Printer Head
Uses grooved press-on rubber type that can be purchased in many retail outlets.



Printers require the use of a Series RL type closure that has a pre affixed label on closure. The label provides an absorbent surface for ink printing. Closure-labels can be printed on the paper label's surface. Note printing on the label's requires an uncoated surface.



086 FLOOR STAND

The height of the 086 can be adjusted between 22" (56 cm) and 50" (127 cm). Mounted on casters, the stand is easy to move. Wheels can be locked in place. The 086 can be rotated 90 degrees and has horizontal adjustments.

Part Number: Z0086033

BAG TRIMMER

The Bag Trimmer removes excess bag neck material for a cleaner and neater appearing package. The trimmer will remove the bag material approximately 1-3/8" (3.5 cm) above the closure while the bag is being closed.

