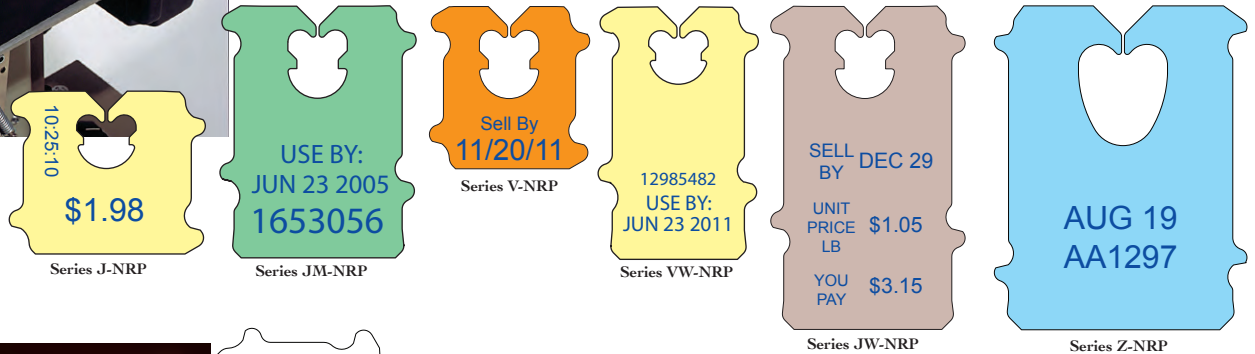
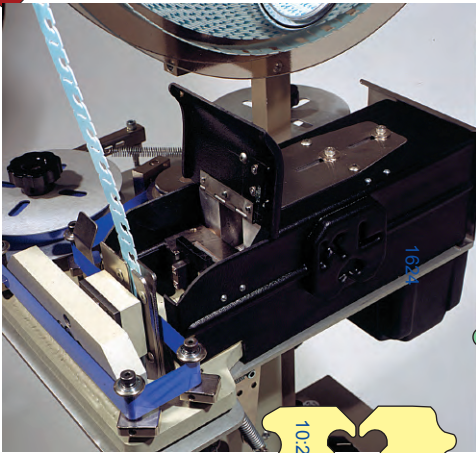


# Type 1011 Printer

## Used with the 872XLS, 872 XLS LM and 873 Automatic Bag Closing Machines



1025:10  
\$1.98  
Series J-NRP

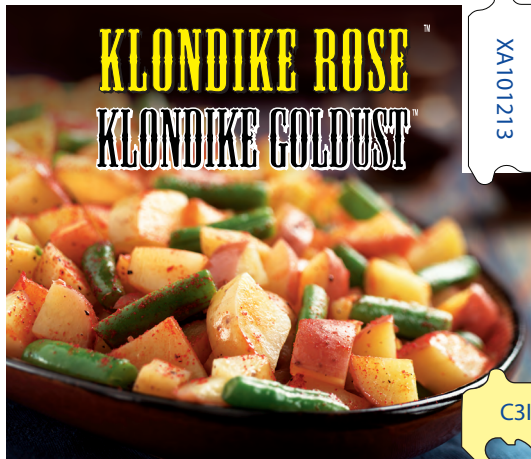
USE BY:  
JUN 23 2005  
1653056  
Series JM-NRP

Sell By  
11/20/11  
Series V-NRP

12985482  
USE BY:  
JUN 23 2011  
Series VW-NRP

SELL BY DEC 29  
UNIT PRICE \$1.05  
LB  
YOU PAY \$3.15  
Series JW-NRP

AUG 19  
AA1297  
Series Z-NRP



The 1011 printer used with the 872XLS, 872 XLS LM and 873 Bag Closing Machines. The printer utilizes steel type and a dry cold-transfer tape for printing. One roll of tape will provide up to 40,000 impressions (depending on information printed). The imprinter features an adjustable cam-driven printing head that insures distinct and durable impressions every time, and provides a tape feed adjustment that reduces the amount of tape used to a minimum. Absolutely no waste. The 1011 will print all Kwik Lok automatically applied Closures and Closure-Labels at speeds up to 110 per minute.

Enter Our "Picture Rose" Cont

Series TF Closure-Label - shown  
Also Uses: Series TFM & TFZ Closure-Labels



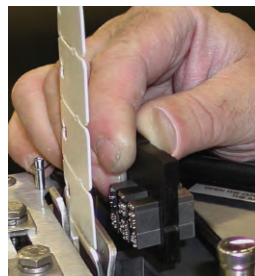
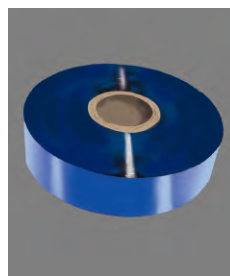
Series PF Closure-Label - shown  
Also Uses: Series PFM Closure-Labels



Series CFJ Closure-Label



**TYPE**  
Hardened steel type provides a consistent and superior print quality throughout thousands of impressions.



**PRINTING TAPE**  
Dry, cold foil tape. Each 1,000 foot roll provides thousands of distinct imprints. Replacing the tape takes 20 seconds or less.

**QUICK CHANGE**  
Type can be changed in less than 15 seconds. Type need not be cleaned or adjusted; just slip the desired date codes and pricing into type holder and drop it into place.