

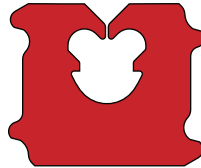
Type 865 Automatic Bag Closing Machine

The 865A Model A Automatic Bag Closing Machine closes packages with the all-plastic Striplok® Bag Closures and Closure-Labels. The machine is equipped with a variable speed control that will close up to 80 packages per minute.

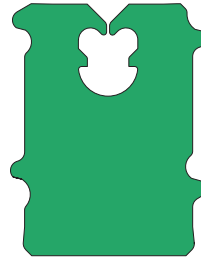
The 865 will close any package width without adjustments. Package width limitations are determined by the closure opening, not the gearing of the machine. The 865 will adapt to most automatic bagging operations.



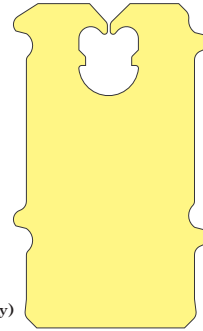
865 MODEL A



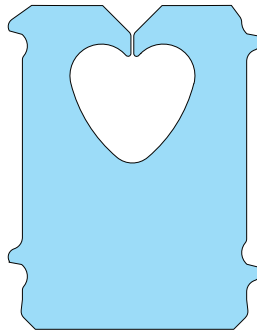
Series "J-NRP" (Medium Duty)
Series "K-NRP" (Heavy Duty)
Bag Closures



Series "JM-NRP" (Medium Duty)
Series "KM-NRP" (Heavy Duty)
Series "KM57-NRP" (Md. Heavy Duty)
Bag Closures



Series "JW-NRP" (Medium Duty)
Series "KW-NRP" (Heavy Duty)
Bag Closures

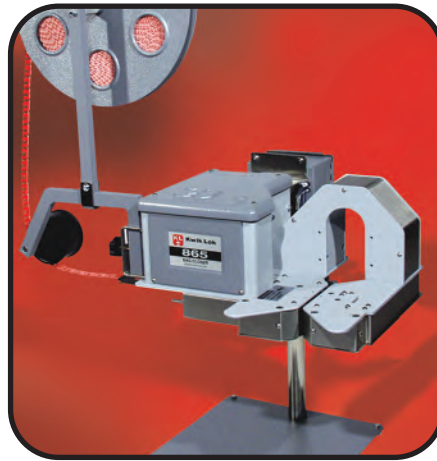


Series "Z-NRP" (Heavy Duty)
Series "Z72-NRP" (Ex. Heavy Duty)
Series "Z90-NRP" (Maximum Duty)
Bag Closures

865 MODEL B



865 MODEL C



865 MODEL D

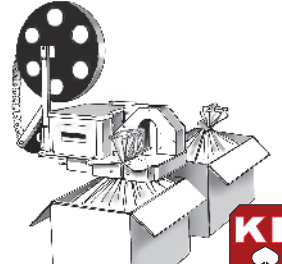
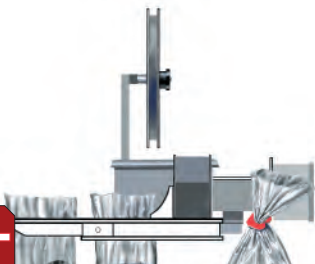


The 865A Model B has an extended feed belt attachment permitting the gear belt to extend 9 inches (22.85 cm) past the front of the machine. The Model B is required on baggers where the Model A cannot mount (i.e. FMC/Agri-Tech apple baggers) or where two operators are hand feeding the machine.

The Model C has a bridge structure connecting the drive and idle belt sides of the machine. This allows the exit end of the machine to be completely open and unobstructed. The Model C is designed to close bags that are too light (small bags, candies, nuts, etc.) or have large bag necks that will not clear from the standard Model A machine (bulk bag-in-a-box products).

The Model C can also be used for products that are contained and cannot drop down from the machine (bottle-in-a-bag applications).

The Model D combines elements of the Model B and Model C. The machine has an extended feed belt attachment along with a bridge structure connecting the drive and idle belt sides of the unit.



KWIK LOK LABELS CAN INCREASE THE SALES OF YOUR PRODUCTS!



PROMOTE YOUR PACKAGES WITH KWIK LOK LABELS!

Add value to your package with attractive, customer printed closure-labels. Labels can be used for package labeling (Variety, Bar Codes, Weight, Grade, Size, etc.). Label can also be used to carry in-store coupons, promotions, games, contests, etc.

Labels can be printed in any number of colors on one or both sides. Kwik Lok can print variable data on your labels (sequential numbering, contest codes, 2D matrix coding). We can also provide labels with scratch-off gaming type labels.

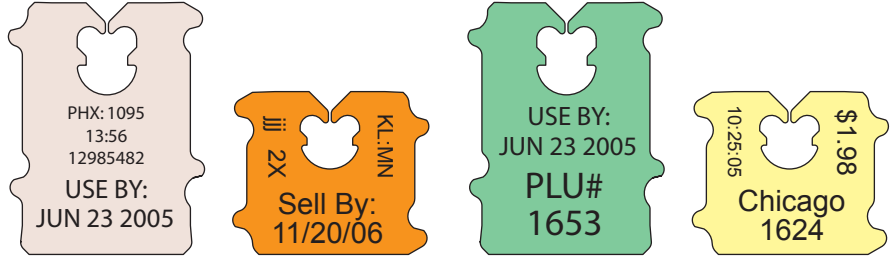
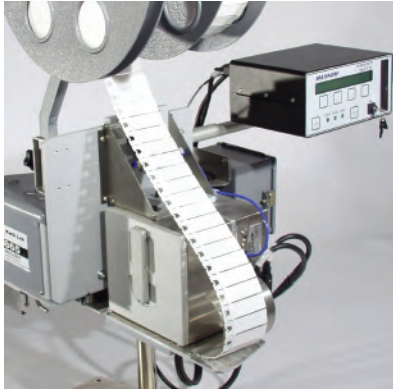
We have several substrates, our standard coated one-side paperboard, or coated two-sides paperboard, and a synthetic material.

We offer three label sizes: Series TF: 2.75" x 2.75" (7 cm x 7 cm); Series PF: 2.75" x .875" (7 cm x 2.22 cm); and Series CFJ: 1.9375" x 2.25" (4.9 cm x 5.7 cm).



Printer Options for the 865 Closer

883 PRINTER



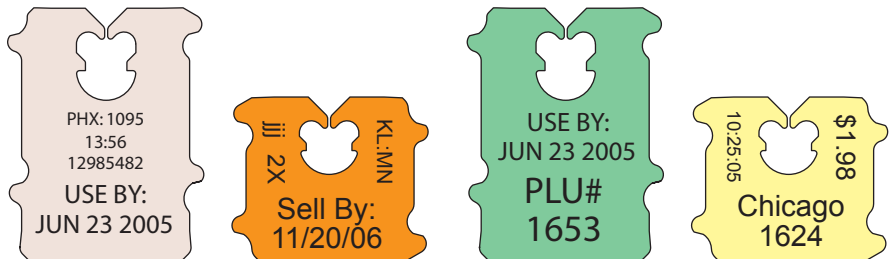
The 883 Thermal Transfer printer, manufactured by Markem-Imaje Corporation, provides a clean, accurate and very flexible method of printing high quality text, graphics, bar codes, real time data, sequential numbering, and other information on the Kwik Lok Closure. The computerized printer does not require the use of type slugs, thus yielding a greater degree of printing flexibility and fast change-over

The 883 Printers are available for printing directly on the plastic closure or on a Kwik Lok Closure-Label (not both).

- Model 883E uses the SmartDate 3i and will print on the Closure only.
- Model 883G uses the SmartDate 3i and will print on the Label only.

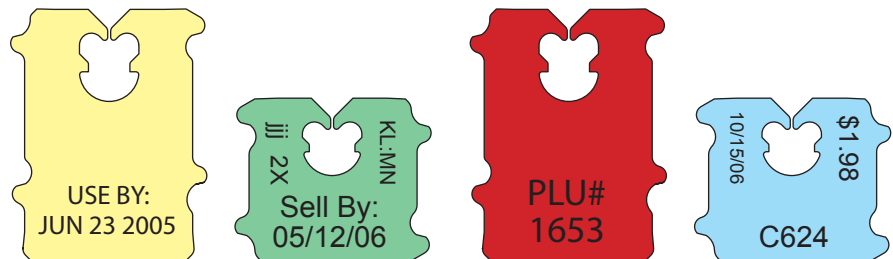
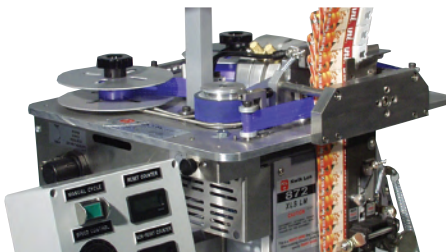


894 PRINTER



The 894 Ink-Jet Printer, manufactured by Squid Ink, has a proven technology that offers better print quality than competitive dot-matrix, CIJ or hi-res printing systems. The printer uses up to 128 printable jets yielding 185 dpi print resolution yielding razor sharp text and clean graphics. The printer will print up to eight lines of text and variable data fields with up-to-the-second accuracy.

897 PRINTER



The 874 is an air operated printer that will print multiline information on any closure used with the 865 Bag Closing Machine. The Printer uses cold transfer tape and hardened steel type, insuring quality of printed copy. Type changes can be accomplished in seconds. The speed of the printer is dependent upon the speed of the 865.

The Printer can be used on following 865 Closers: 865AA, 865AB, 865AC, and 865 AD



867 Model A Clamp Adjustable Stand



867 Model B Clamp Adjustable Stand



887 Model A Crank Adjustable Stand



887 Model B Crank Adjustable Stand



887 Model C Crank Adjustable Stand with Bag Tensioner



887 Model D Crank Adjustable Stand with Bag Tensioner

Kwik Lok Stands for the 865 Bag Closing Machine

The 867 Stands are adjustable in height, but remain fixed once the clamp has been set. The 867 Stands are available with or without a conveyor.

The 887 Stands are adjustable by turning the crank, which makes for fast, easy height adjustments. The 887 Stands are available with or without conveyors. Three models can be mounted with Kwik Lok's Bag Tensioners (Models C,D & F).

The 886 Stand is designed for large heavy packages and bulk packages up to 50 Lbs (23 Kg) in content weight. The conveyor accepts the 865, Model CZ90 Bag Closing Machine that uses the Series Z90-NRP Bag Closures.



887 Model E Crank Adjustable Stand



887 Model F Crank Adjustable Stand with Bag Tensioner



886 Conveyor and Stand



890D Bag Trimmer

The Trimmer cuts off the excess bag neck material, leaving 2.5 inches (6.4 cm) above the closure. The Trimmer can be mounted on the 865AA and 865AB (extended drive) Closing Machine. The unit is easily removed by loosening two knobs. There is a coupler that ties the Trimmer into the 865 Closing Machine.

Trimming the bag is accomplished by a single rotating 3" (5 cm) diameter hardened steel cutter blade.

The Trimmer comes with a bag scrap vacuum chute that accepts a standard 2.25" (5.7 cm) vacuum hose (i.e. standard shop vacuum).

865 Maintenance Stand
Part No. Z8065025



Table Top Stand
Part No. Z8065128



Spare Parts Kit
Part # Z8065086
Part # Z8065086S (stainless steel)
For machines using Z-NRP or Z90-NRP
Part # Z8065109
Part # Z8065109S (stainless steel)